

## Reopening Information

Thanks to the work of our Brighton Reopening and Rethinking Task Force, we have created a draft plan for a return to school. It is based on guidance from the State Department of Health and State Education Department and is subject to state approval. The primary goal was to develop plans that placed the safety of students, staff and the community above all else, while maintaining a focus on fulfilling our responsibility to address both the academic and social/emotional needs of our students.

Because of the social distancing guidelines, requirement for masking, and facility limitations, the District will adopt an alternating model of in-person instruction. Families may opt for remote learning only. In-person instruction will be coordinated by the first letter of the last name (e.g. A-L, M-Z) so that students may attend classes two days per week on the same days as siblings or household members. Three days per week will be a combination of synchronous and non-synchronous instruction. All students learning remotely on Wednesdays will allow for deep cleaning and sanitizing of classrooms and buildings.

### Scheduling

- Students with last names beginning with A-L will attend in person on Mondays and Thursdays. Remote learning takes place Tuesdays, Wednesdays, and Fridays.
- Students with last names beginning with M-Z will attend in person on Tuesdays and Fridays. Remote learning takes place Mondays, Wednesdays, and Thursdays.
- Select special education students will attend school Mondays, Tuesdays, Thursdays, and Fridays. Remote learning will take place on Wednesdays.
- A plan for all virtual learning is being developed based on our capacity and requests from families.

● Attends School

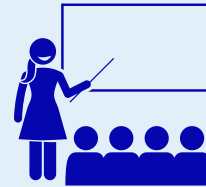
● Remote Learning

	Monday	Tuesday	Wednesday	Thursday	Friday
A-L	●	●	●	●	●
M-Z	●	●	●	●	●
SPED	●	●	●	●	●

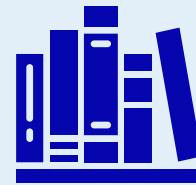
### In Order to Reopen All NYS Schools Must:



Maintain Appropriate Social Distancing



Provide Daily Teacher/Student Interactions



Ensure Educational Equity



Establish a Process for Health Checks



Require Face Coverings for Staff and Students



Regularly Clean and Disinfect Schools and Buses



Promote Correct Hand Hygiene and Respiratory Etiquette