

## TRACK 6

## 4 MEASURE CADENCES

(Play 2 Times)

G- II/V7/I Sequence C7 F $\Delta$  F $\Delta$

A- D7 G $\Delta$  G $\Delta$

B- E7 A $\Delta$  A $\Delta$

C- F7 B $\flat$  $\Delta$  B $\flat$  $\Delta$

D- G7 C $\Delta$  C $\Delta$

E- A7 D $\Delta$  D $\Delta$  D $\Delta$   
fine

## TRACK 7

BLUES IN KEY OF B $\flat$  CONCERT

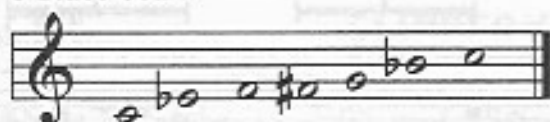
(Play 11 Times)

C7 F7 C7 C7

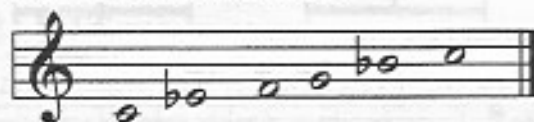
F7 F7 C7 C7

D- G7 C7 G7 C7  
(D- G7) fine

C Blues Scale



C Minor Pentatonic Scale



Think of the blues progression as being three 4-bar phrases: A beginning, a middle, an end.